



GOOD MORNING  
Have Good Trading Day

MONDAY



Price is what you pay.  
Value is what you get.

- Warren Buffet



## MARKET PLUSE

### INDIAN INDICES

NAME	CMP	NET CH.	%
SENSEX	26425	+54	+0.21
NIFTY	7982	+17	+0.22

### INDIAN ADR'S

SYMBOL	CLOSE	GAIN/ LOSS %
DRREDDY	52.12	-0.44
HDFCBANK	56.65	-0.04
ICICIBK	9.80	+1.24
INFY	31.02	-0.74
TATAMOTOR	34.33	-0.81
WIPRO	11.69	-2.01

### FII AND MF ACTIVITY

SYMBOL	In Crs.
FIIs Eq (Provisional)	-670.96
FIIs Index Future	120.45
FIIs Index Options	464.36
FIIs Stock Future	-42.35
FIIs Stock Options	-63.37
DII's Eq (Provisional)	705.58

### CURRENCY

RBI RATE	12-JUN-2015
RUPEE - \$	64.0301
EURO	71.8994
YEN 10	51.8500
GBP	99.2723

## MARKET PLUSE

### GLOBAL INDICES

NAME	CMP	NET CH.	%
DOW	17898	-140	-0.78
NASDAQ	5051	-31	-0.70
NIKKEI	20361	-46	-0.23
HANG SENG	26972	-308	-1.13
SGX NIFTY	7966	-9	-0.11

### WORLD COMMODITIES

FUTURE	U\$\$	CHANGES
CRUDE	59.76	-0.20
NATURAL GAS	2.807	+0.057
GOLD	1181.4	+2.2
SILVER	15.910	+0.085
COPPER	2.6700	-0.0080

### WORLD EVENTS

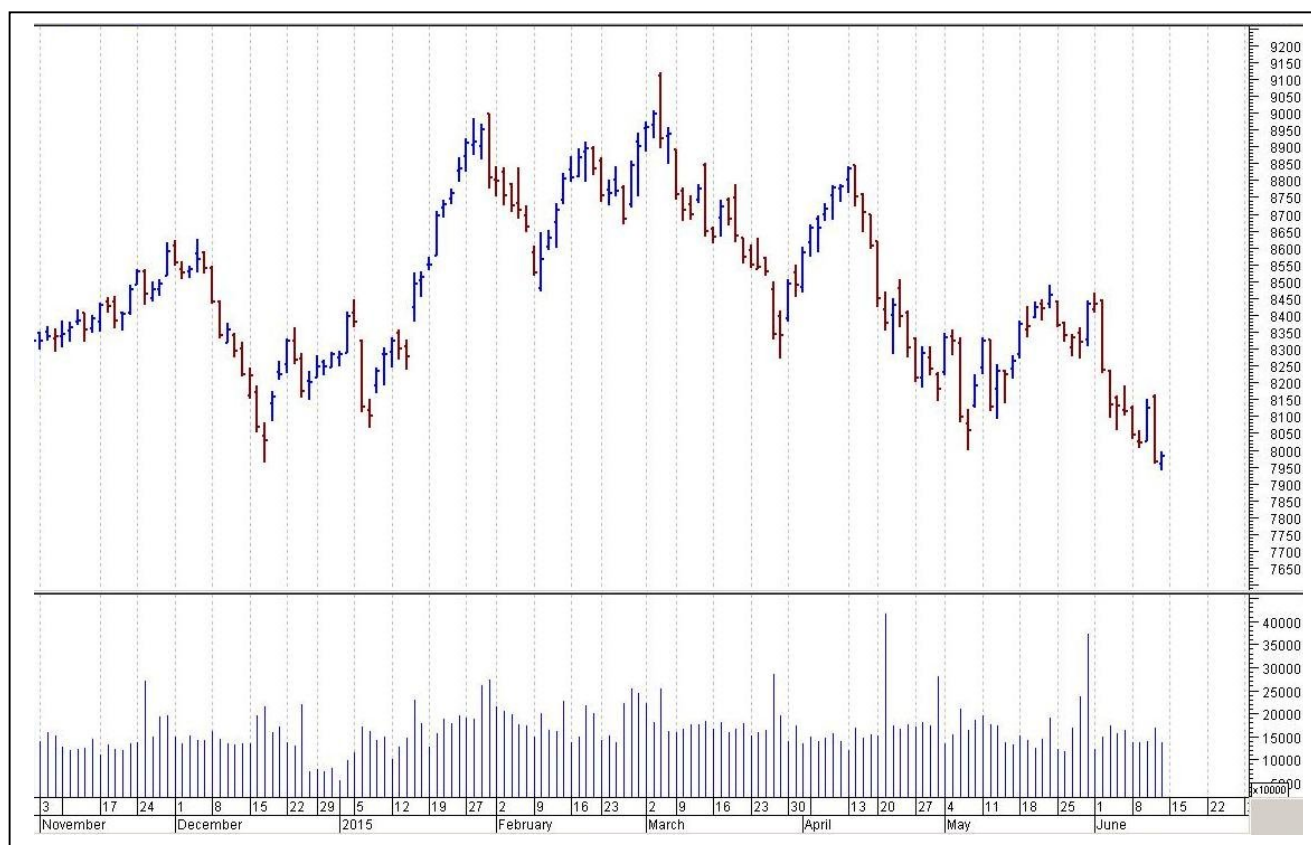
- US: Empire State Manufacturing Index
- Capacity Utilization Rate
- Industrial Production m/m
- NAHB Housing Market Index
- UK: NIL

## TOP STORY

- Tata Motors reports 2.15% rise in global sales in May.
- Govt infra firm to award Rs 1.3-trn highway projects
- Tata Steel approaches Acas to resolve pension dispute
- MHA officials skip talks on Sun TV's security clearance
- NTPC intends to buy state stressed power assets
- China to extend economic diplomacy to EU infra fund
- Cairn India, Vedanta boards approve merger at 1:1 ratio.
- TCS, Infosys visa issue: Govt to intervene when required
- FinMin may finalise additional fund needs for banks in 3 mnths
- ABG Shipyard in talks with Privinvest for stake sale.
- NDMC defers Taj Mansingh auction; IHCL gets 3-month extension



## NIFTY CHART



## MARKET COMMENTARY

Indian markets could not get much relief from their last session's brutal sell-off and the major averages showed a choppy trade throughout the day, finally resulting in a modestly higher closing. Though, there was modest gains but the traders lacked confidence to place bet and all the recovery attempts were quickly sold out by the cautious investors ahead of the key macro data of CPI inflation and Industrial production, slated to be announced after the market hours. For today's trade nifty likely to trade in the range between 8010 – 8035 in the upper side and 7960 – 7940 in the lower side.

### MARKET LEVELS

	CMP	SUPPORT LEVELS				RESISTANCE LEVELS			
NIFTY	7982	7960	7940	7910	7870	8010	8035	8055	8070
USDINR	64.2667	64.20	64.11	64.04	63.93	64.32	64.38	64.46	64.58





### FUTURES CORNER

SCRIPS	CLOSE	SUPPORT	TARGET		REMARKS
		STOP LOSS	T1	T2	
DISHTV	106.25	105	108	109.2	TRADING CALL
LICHSGFIN	401.3	397	407	412	TRADING CALL
BATAINDIA	988.7	984	998	1014	TRADING CALL

### EQUITY CORNER

SCRIPS	CLOSE	SUPPORT	TARGET		REMARKS
		STOP LOSS	T1	T2	
RAYMOND	447.8	442	462	474	TRADING CALL
NBCC	753.4	767	768	778	TRADING CALL

### DELIVERY BASED CALL / INVESTMENT CALL

SCRIPS	CMP	SUPPORT	TARGET		REMARK
		STOP LOSS	T1	T2	

### BULK DEALS (BSE)

SCRIP	CLIENT NAME	BUY/SELL	QUANTITY	PRICE
NIL				

### BULK DEALS (NSE)

SCRIP	CLIENT NAME	BUY/SELL	QUANTITY	PRICE
UNIPLY	SARA CAPITAL LIMITED	BUY	100000	48.1

### SCRIP'S IN F&O BAN

(To resume for normal trading below 80% of market wide limit required)

AMTEKAUTO



NIFTY 50 STOCKS: SUPPORT & RESISTANCE						
Symbol	Close	Support 1	Support 2	Pivot Point	Resistance1	Resistance2
ACC	1402.15	1382.80	1363.45	1395.45	1414.80	1427.45
AMBUJACEM	218.45	215.00	211.55	218.25	221.70	224.95
ASIANPAINT	705.65	697.50	689.35	710.15	718.30	730.95
AXISBANK	551.45	544.00	536.55	548.25	555.70	559.95
BAJAJ-AUTO	2286.30	2226.13	2165.97	2261.57	2321.73	2357.17
BANKBARODA	146.95	145.00	143.05	146.95	148.90	150.85
BHARTIARTL	414.80	407.78	400.77	414.57	421.58	428.37
BHEL	248.30	243.63	238.97	246.57	251.23	254.17
BPCL	837.50	827.08	816.67	840.67	851.08	864.67
CAIRN	180.75	179.05	177.35	181.05	182.75	184.75
CIPLA	581.65	573.63	565.62	579.82	587.83	594.02
COALINDIA	396.10	392.80	389.50	396.90	400.20	404.30
DRREDDY	3317.55	3300.95	3284.35	3320.45	3337.05	3356.55
GAIL	396.15	391.55	386.95	394.65	399.25	402.35
GRASIM	3355.30	3325.33	3295.37	3350.17	3380.13	3404.97
HCLTECH	896.35	881.43	866.52	897.67	912.58	928.82
HDFC	1190.40	1165.97	1141.53	1180.43	1204.87	1219.33
HDFCBANK	1009.15	995.92	982.68	1003.38	1016.62	1024.08
HEROMOTOCO	2503.55	2483.63	2463.72	2504.12	2524.03	2544.52
HINDALCO	116.75	115.48	114.22	117.37	118.63	120.52
HINDUNILVR	814.50	809.73	804.97	815.62	820.38	826.27
ICICIBANK	295.95	289.73	283.52	293.37	299.58	303.22
IDEA	170.45	166.28	162.12	169.17	173.33	176.22
IDFC	145.40	143.55	141.70	145.15	147.00	148.60
INDUSINDBK	810.80	791.87	772.93	802.93	821.87	832.93
INFY	1975.05	1945.18	1915.32	1985.37	2015.23	2055.42
ITC	297.55	294.98	292.42	297.57	300.13	302.72
KOTAKBANK	1311.10	1276.97	1242.83	1298.33	1332.47	1353.83
LT	1657.45	1643.90	1630.35	1663.55	1677.10	1696.75
LUPIN	1721.60	1699.63	1677.67	1714.07	1736.03	1750.47
M&M	1192.95	1179.63	1166.32	1189.32	1202.63	1212.32
MARUTI	3736.80	3703.20	3669.60	3729.10	3762.70	3788.60
NMDC	115.10	113.65	112.20	115.85	117.30	119.50
NTPC	136.50	135.57	134.63	136.53	137.47	138.43
ONGC	300.40	298.95	297.50	300.95	302.40	304.40
PNB	131.90	130.72	129.53	132.43	133.62	135.33
POWERGRID	145.40	143.12	140.83	144.53	146.82	148.23
RELIANCE	889.85	881.17	872.48	886.93	895.62	901.38
SBIN	253.95	252.00	250.05	253.75	255.70	257.45
VEDL	183.80	181.10	178.40	184.25	186.95	190.10
SUNPHARMA	813.55	805.62	797.68	815.18	823.12	832.68
TATAMOTORS	421.80	416.20	410.60	422.85	428.45	435.10
TATAPOWER	72.65	70.57	68.48	71.78	73.87	75.08
TATASTEEL	297.55	294.17	290.78	297.53	300.92	304.28
TCS	2505.80	2458.75	2411.70	2523.85	2570.90	2636.00
TECHM	551.45	543.73	536.02	551.12	558.83	566.22
ULTRACEMCO	2748.50	2696.47	2644.43	2732.03	2784.07	2819.63
WIPRO	537.35	526.10	514.85	540.25	551.50	565.65
YESBANK	805.45	796.02	786.58	803.43	812.87	820.28
ZEEL	333.70	330.87	328.03	333.48	336.32	338.93



## CORPORATE ACTION / BOARD MEETINGS

NSE Download Ref.No.:NSE/CML/29902:- Face Value Split - JMT Auto Limited (JMTAUTOLTD) from Rs. 10 to Rs. 2 wef June 25, 2015

NSE Download Ref No :NSE/FAOP/29904:- Adjustment of Futures and Options contracts in the security INFY. The adjusted strike price and futures shall be arrived at by dividing the old strike price by the adjfactor i.e 2. The revised Market lot would be 250 wef June 15, 2015

NSE Download Ref.No.: NSE/SURV/29940:- Mastek Limited (Symbol- MASTEK) shall be transferred from trade for trade segment (series: BE) to rolling segment (series: EQ) with effect from June 26, 2015 (Friday).

### BOARD MEETINGS

COMPANY NAME	DATE	PURPOSE	RS. PER SH.
TORNTPHARM	15-Jun-15	Dividend	6.25
INFY	15-Jun-15	AnnualGeneralMeeting/Dividend/Bonus 1:1	29.5
BANKBARODA	16-Jun-15	Annual General Meeting/ Dividend	3.2
GRUH	16-Jun-15	Annual General Meeting/ Dividend	2
ASHOKLEY	17-Jun-15	Annual General Meeting/ Dividend	0.45
LAKSHVILAS	17-Jun-15	Dividend	2
DENABANK	18-Jun-15	Annual General Meeting/ Dividend	0.9
DENORA	18-Jun-15	Dividend Rs 1.50 Per Share	1.5
KOTAKBANK	18-Jun-15	Annual General Meeting/ Dividend	0.9
CMAHENDRA	18-Jun-15	Bonus 1:1	
UNIONBANK	18-Jun-15	Annual General Meeting/ Dividend	6
WELSPUNIND	18-Jun-15	Dividend	7.5
SYNDIBANK	18-Jun-15	Annual General Meeting/ Dividend	4.7
WELCORP	18-Jun-15	Dividend	0.5
VISHNU	18-Jun-15	Dividend	1
ATUL	18-Jun-15	Annual General Meeting/ Dividend	8.5
ALBK	18-Jun-15	Annual General Meeting/ Dividend	1.63
MAHABANK	19-Jun-15	Annual General Meeting/ Dividend	0.8
ESSELPACK	19-Jun-15	Annual General Meeting/ Dividend	1.6
BIRLACORPN	19-Jun-15	Annual General Meeting/ Dividend	6
NAVINFLUOR	19-Jun-15	Dividend	8.5
HINDUNILVR	19-Jun-15	Annual General Meeting/ Dividend	9

## NEWS & RUMOURS:

- Gold (Spot Dollar) major support = \$1157/\$1123 & Resistance = \$1206/\$1231.
- Crude oil range->\$54 to \$64.
- U.S. Equities Decline as Greek Debt Talks Show Little Progress: - U.S. stocks fell, as equities trimmed a weekly gain, amid concern Greece won't reach a deal with its creditors as its debt negotiations drag on.
- Consumer Sentiment in U.S. Climbed More Than Forecast in June: - Consumer confidence rose more than forecast in June as Americans were the most upbeat about their wage prospects in seven years. The University of Michigan preliminary consumer sentiment index increased to 94.6, topping all estimates in a Bloomberg survey of economists, from a final reading of 90.7 in May that was the lowest in six months.
- Treasuries Gain as Greek Default Concern Spurs Demand for Safety: - Treasuries rose for a second day after Bild newspaper reported Germany is preparing for a Greek default, sparking demand for the safest assets.
- Copper falls from 2-week high after raft of China data: - Copper prices fell from the previous session's two-week top on Thursday, after a flurry of Chinese economic data came in broadly in line with market expectations.
- NYMEX crude dips in Asia ahead of latest U.S. rig count data: - [Crude oil](#) prices edged down in Asia on Friday with another look at U.S. production levels ahead expected to set the near-term tone.
- Gold futures edge higher but upside seen limited: - Gold prices edged higher in European morning hours on Friday, but gains were expected to remain limited by a stronger U.S. dollar and as market participants eyed additional U.S. data due later in the day for further indications on the strength of the economy.

## TRENDS & OUTLOOK – DATE: 15- June- 2015

### PRECIOUS METALS:

COMMDITY (MCX)	S2	S1	PIVOT POINT	R1	R2
GOLD (Aug)	26466	26700	26927	27136	27365
SILVER (July)	34700	35600	36700	38100	39300

### BASE METALS

COMMDITY (MCX)	S2	S1	PIVOT POINT	R1	R2
COPPER (June)	369	374	379	385	390
ZINC (June)	130.30	133	135.75	138	140.40
LEAD (June)	113.55	116.10	118.60	121.30	123.45
NICKEL (June)	801	819	840	857	875

### ENERGY

COMMDITY (MCX)	S2	S1	PIVOT POINT	R1	R2
CRUDE OIL (June)	3650	3745	3855	3939	4041
NATURAL GAS (June)	167	174	180	186	193

### DATE TALKS : TODAY'S ECONOMIC DATA :

German Buba President Weidmann Speaks, Empire State Manufacturing Index, ECB President Draghi Speaks, Capacity Utilization Rate, Industrial Production, NAHB Housing Market Index.





**Registered Office**

Indira House, 3rd Floor, 5 Topiwala Lane,  
Opp. Lemington Road Police Station, Grant Road (East), Mumbai - 400007.

**Corporate Office**

'Ramavat House' E-15, Saket Nagar, Indore - 452018 (M.P.)

**Customer Care**

Tel: +91-731-4097170/ 71/ 72/ 73/ 74 M. +91 93031 72345

Email: [customercare@indiratrade.com](mailto:customercare@indiratrade.com) [www.indiratrade.com](http://www.indiratrade.com)



**INSTITUTIONAL DEALING UNIT**

Africa House, 5, Topiwalla Lane, Lamington Road, Mumbai, 400007

Tel: +91 22 30080678 Fax : +91 22 23870767 Email : [ie@indiratrade.com](mailto:ie@indiratrade.com)

**Disclaimer**

This report is for private circulation within the Indira Group. This report is strictly confidential and for information of the selected recipient only and may not be altered in any way, transmitted to, copied or distributed, in part or in whole, to any other person or to the media or reproduced in any form. This report should not be construed as an offer or solicitation to buy or sell any securities or any interest in securities. It does not constitute a personal recommendation or take into account the particular investment objectives, financial situations, or any such factor. The information, opinions estimates and forecasts contained here have been obtained from, or are based upon, sources we believe to be reliable, but no representation of warranty, express or implied, is made by us to their accuracy or completeness. Opinions expressed are our current opinions as of the date appearing on this material only and are subject to change without notice.